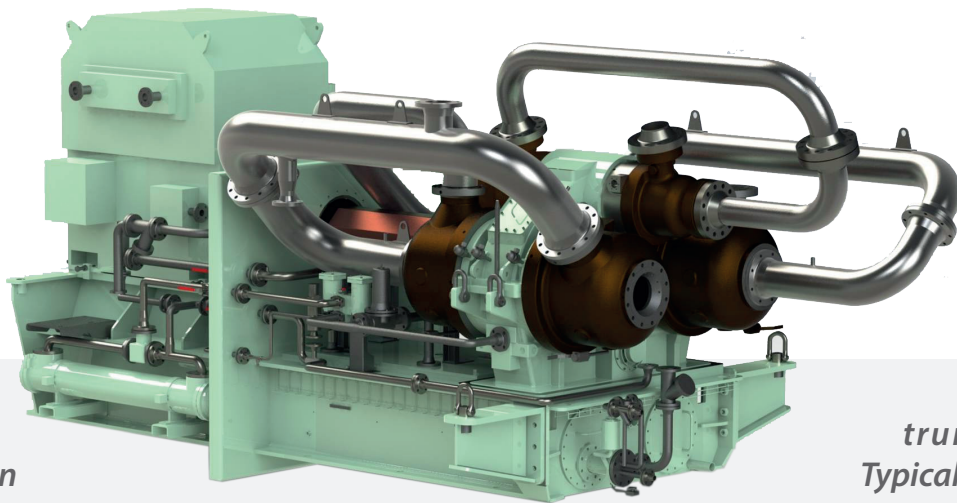




# 6-STAGE GAS COMPRESSOR

CM6 series: for Dual Fuel Engine Gas Supply on XDF powered LNG Carriers



*Electric motor-driven 6-stage cryogenic/warm compressors, equipped with variable diffuser vanes on first stage. Supplied complete with lube oil and seal gas systems, as well as on-skid and field ins-*

*truments. Typical flows up to 5,500 m<sup>3</sup>/h are easily handled at inlet temperatures of up to -25 °C, while delivering 17 bara pressure. Full marine certification is of course included in the scope.*

## KEY ADVANTAGES

### COMPACT, SPACE SAVING ARRANGEMENT

Simple onboard integration, and access for operation and maintenance.

### RIGID HEAVY DUTY SKID

Proper stability of the motor/compressor arrangement, for trouble-free operation.

### HIGH EFFICIENCY AND PERFORMANCE

Smaller motor sizes squeeze cost and assure economic operation.

### ADVANCED, OIL-LUBRICATED BULKHEAD SEAL

Accessibility for shaft alignment, no seal gas consumption, reliability and safe operation.

### INTEGRATED LOCAL PANEL

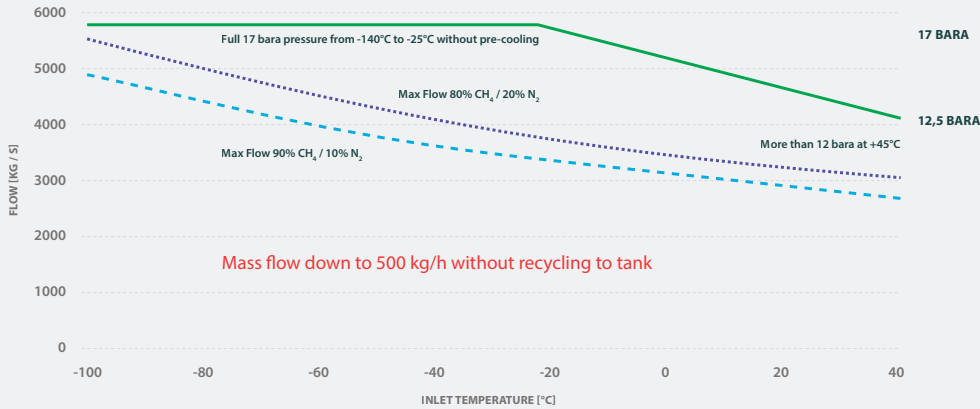
★ Cabling and tubing pre-installed by Cryostar for reduced shipyard installation cost.

### PROCESS INTEGRATION WITH THE CARGO HANDLING SYSTEM

★ Cryostar provides a combined, well-integrated package with the Gas Heaters/Vaporizers.

### IAS INTEGRATION

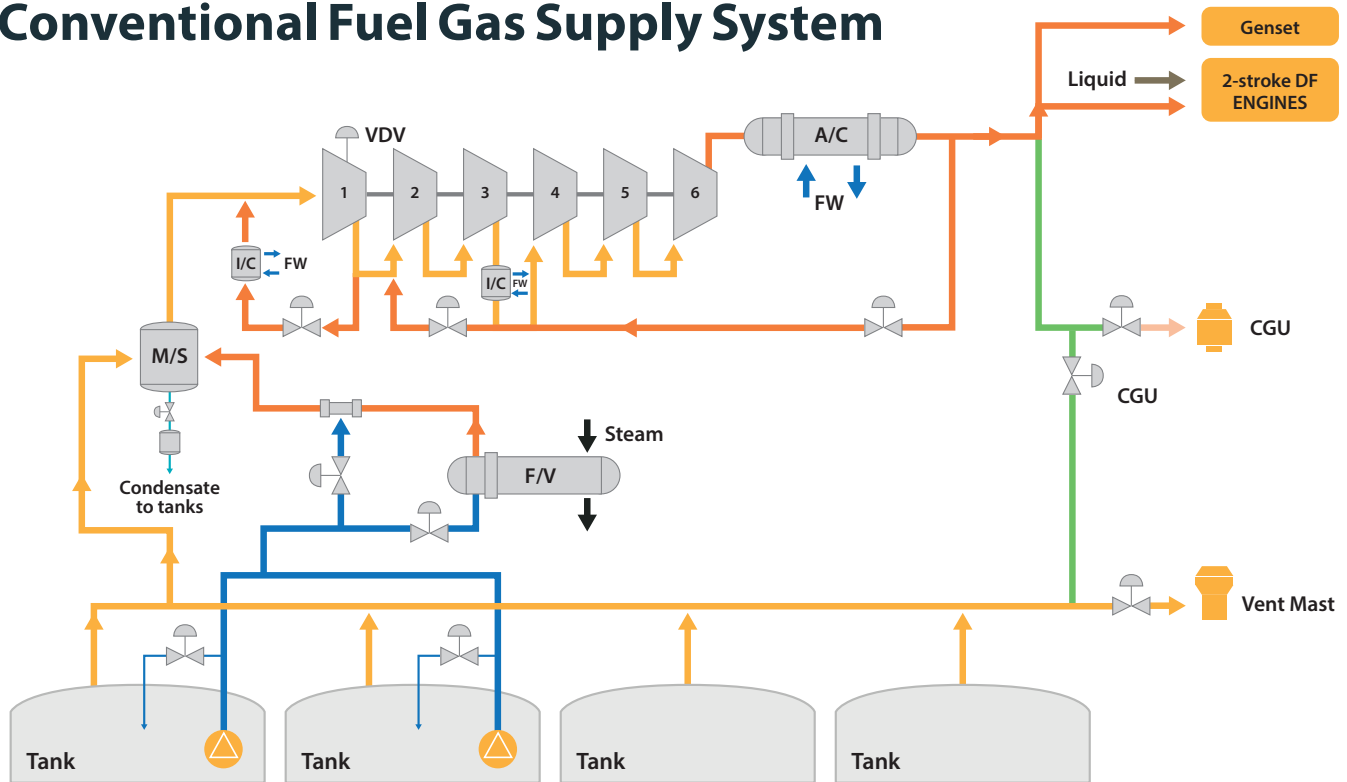
★ As an option, serial link to IAS, or fully redundant integration with mots IAS vendor.



## Extended operating range

← Typical operating curve of the BOG 6-Stage Compressor

## Conventional Fuel Gas Supply System



## APPLICATIONS

### ★ FOR LNG CARRIERS

as Fuel Gas compressor to maintain the cargo tank pressure while supplying boil-off gas as fuel to the dual fuel engines and/or gas combustion unit during the voyage.

### ★ FOR LAND - BASED PLANTS

these units are supplied as Cryogenic Compressors, without bulkhead and designed according to API617 if required (with separate lube oil system).